

**3-31 WELL COORDINATES:
SURFACE COORDINATES**

340.6 North of the South Boundary
344.3 West of the East Boundary
Theo. Sec. 36 - Twp. 91 - Rge. 13 - W. 5Mer.

GEOGRAPHIC COORDINATES:
Lat. 56.933294° N. Long. 115.939914° W. NAD83

UTM COORDINATES
North: 6310460.8 East: 564511.7 NAD83

BOTTOM HOLE COORDINATES

ENTER ZONE
300.0 North of the South Boundary
100.0 East of the West Boundary
Theo. Sec. 31 - Twp. 91 - Rge. 12 - W. 5Mer.

GEOGRAPHIC COORDINATES:
Lat. 56.932936° N. Long. 115.932279° W. NAD83

UTM COORDINATES
North: 6310428.1 East: 564976.9 NAD83

END ZONE
300.0 North of the South Boundary
800.0 East of the West Boundary
GEOGRAPHIC COORDINATES:
Lat. 56.932942° N. Long. 115.920779° W. NAD83

UTM COORDINATES
North: 6310439.8 East: 565676.7 NAD83

SRGG ET AL SAWN HZ 3-31-91-12

(SURFACE LOCATION L.S.1 Sec.36 Twp.91 Rge.13 W.5Mer.)

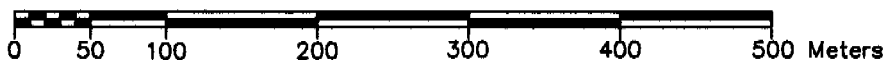
WELL SITE

WITHIN THEORETICAL

ENTER ZONE: L.S.4 Sec.31 Twp.91 Rge.12 W.5Mer.

END ZONE: L.S.3 Sec.31 Twp.91 Rge.12 W.5Mer.

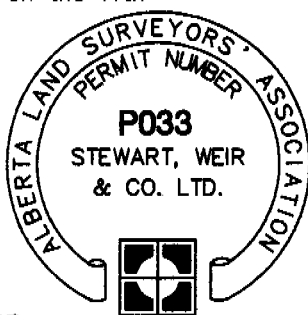
SCALE 1:5000



I, Paul S. Dixon, Alberta Land Surveyor, of the City of Calgary, Alberta, certify that the survey represented by this plan is true and correct to the best of my knowledge, has been carried out in accordance with the Alberta Land Surveyors' Association Manual of Standard Practice, and was completed on the 11th of July, 2005.

Paul Dixon
Alberta Land Surveyor

[Signature]
Witness



AREAS:
Well Site 1.20 ha (2.97 Ac.)
New Cut Area 0.00 ha (0.00 Ac.)
(Within MSL 035154)

Length of Access Road 0m

ELEVATIONS 801.00 Ground
N.W. 806.70 N.E. 799.58
S.W. 803.67 S.E. 800.23

DATUM
Fd. Spike N.E. Cor.
TP et al SAWN 1-36-91-13
Elevation = 799.58

LEGEND:
Distances are in metres and decimals thereof.
Statutory Iron Posts found are shown thus ●
Iron bars found are shown thus ◆
Iron Bars placed are shown thus ◇
Traverse Stations are shown thus X
Area referred to bounded thus _____

THE PROPOSED WELL CENTRE IS:

- At least 1.5 km from the Corporate Limits of a City Town, Village or Hamlet Yes No
- Outside any potential coal development area Yes No
- At least 100m from the Ordinary High Water Mark of any significant water body Yes No
- At least 100m from any surface improvements Yes No
- At least 40m from any surveyed road Yes No
- At least 5.0 km from a lighted aerodrome Yes No
- At least 1.6 km from an unlighted aerodrome Yes No
- At least 1.5 km from the nearest residence Yes No
- Are there any underground facilities on lease or access road Yes No
- Outside a designated significant historical site or area Yes No
- Distance to Red Earth Creek = ± 61 km Southeast Yes No

OPERATOR:

SURGE GLOBAL ENERGY

[Signature]

REVISED SEPTEMBER 28 - ADDED HZ INFORMATION

DATE JULY 11, 2005	DRAWN BY PSD	DWG. FILE 28270-WEL-05A
SCALE 1:5000	CHECKED BY PSD	FILE No. 103-28270

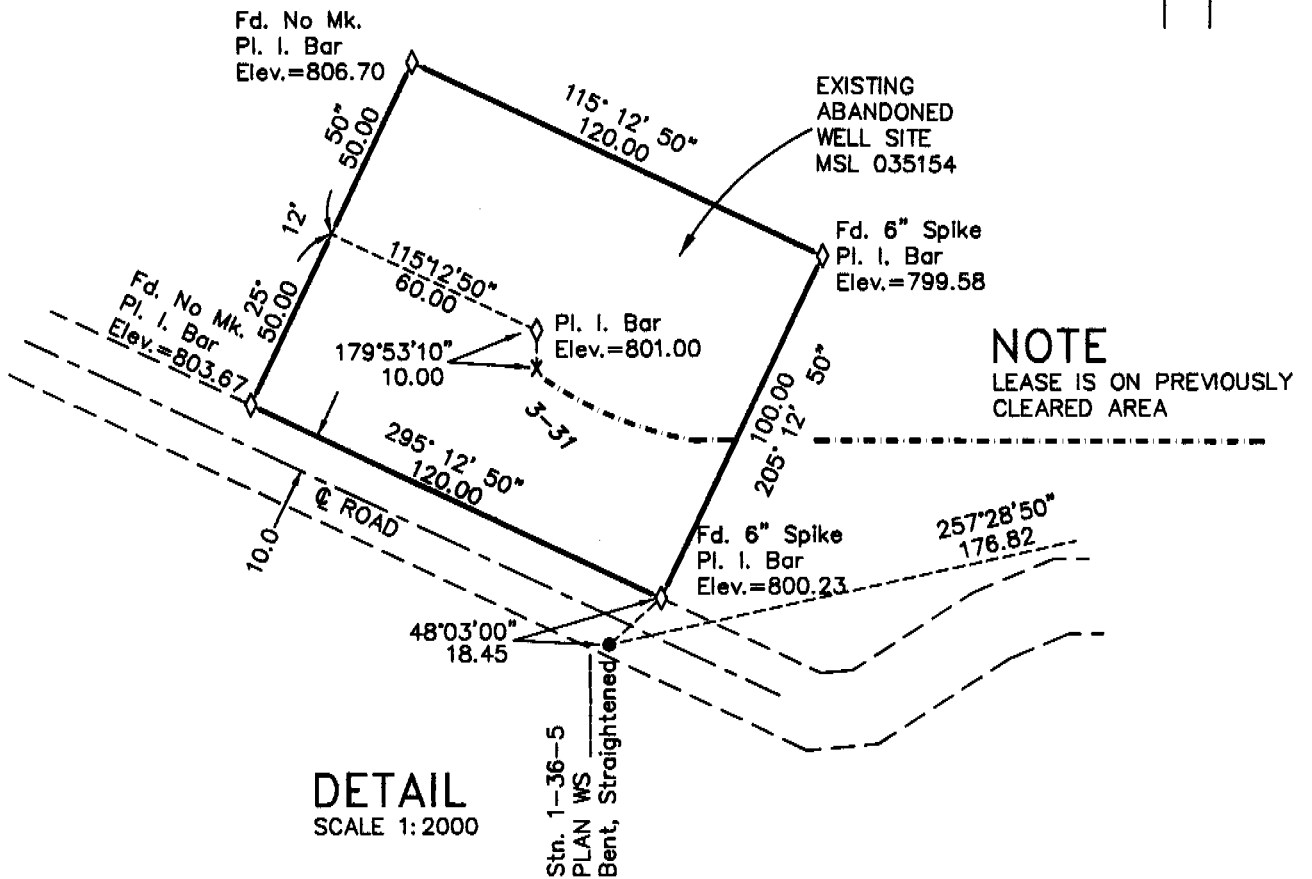
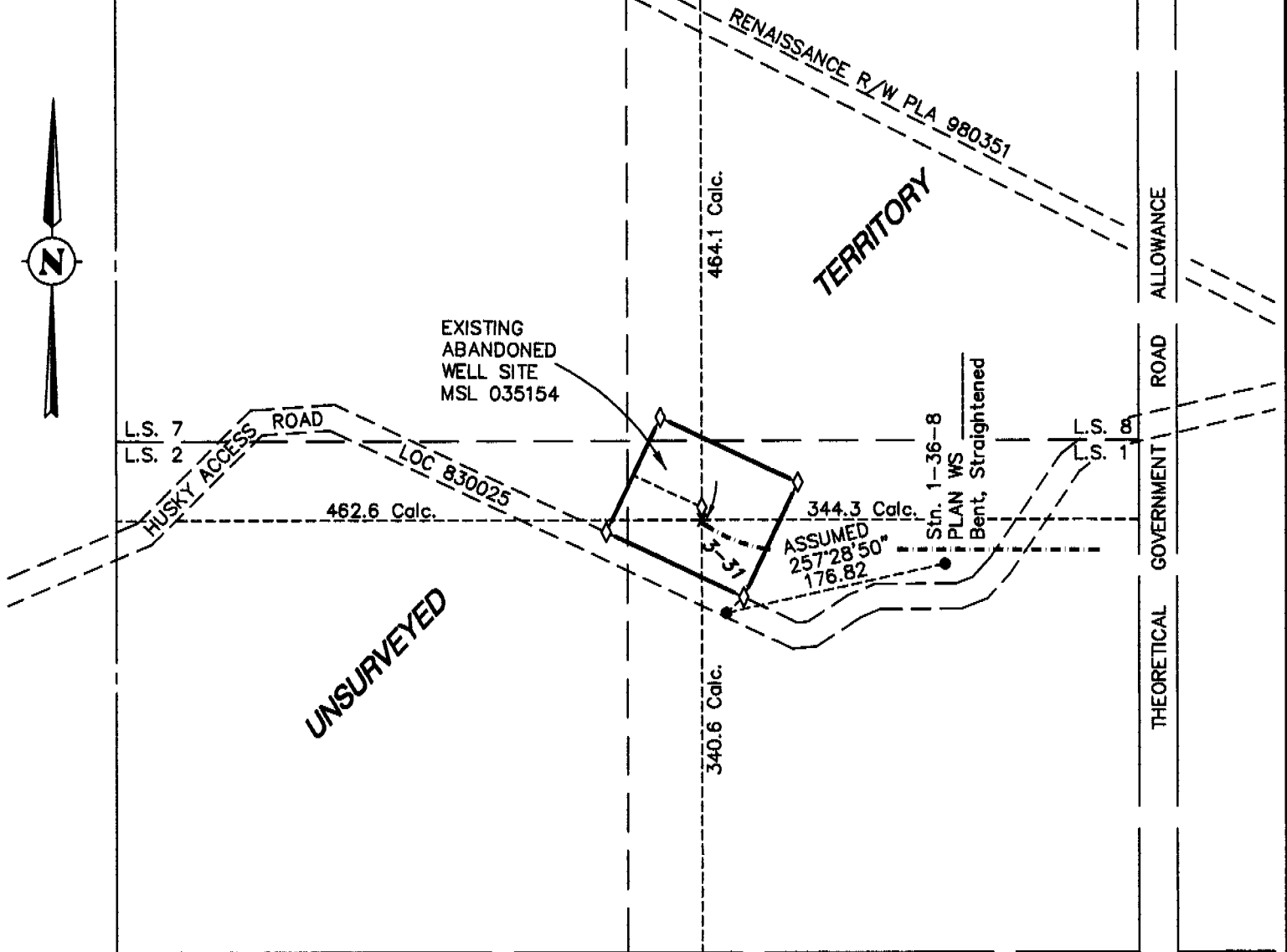
STEWART, WEIR & CO. LTD.
11405 - 163RD ST., EDMONTON

REGISTERED TRAPLINES

TPA 66
 WALTER WHITEHEAD
 P.O. BOX 7372
 PEACE RIVER
 T8S 1S9

36

91-13-5





OVERVIEW
SCALE 1:10,000

